

Fixed Solar panel 150w

Model No: **XRM-150W**

Product specification

Front Cover :	3.2mm,High Transmission, Low Iron, Tempered ARC Glass
Frame Material	Anodized Aluminum Alloy
Accessories:	IP65 Junction box and 90cm length 4.0mm ² cable
Color:	Silver / black
Dimensions (MM)	1230x670x35MM
Packing Size (CM)	125x69x5CM
Net weight (KG)	9.3KG
Gross weight (KG)	10KG

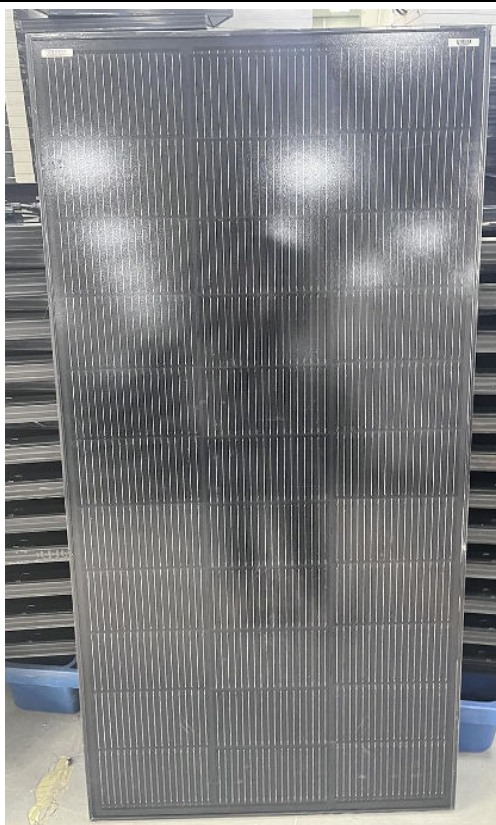
Key Features

- 3.2mm tempered low-iron glass: optically clear with high impact resistance
- High-efficiency A-grade monocrystalline solar cells: for better performance & longer lifespan
- Black frame, cells and substrate: looks great on any vehicle
- High-quality MC4 plugs w/0.9m cable: ensures a secure, waterproof connection

Solar panel

Solar Cell	Monocrystalline solar cell
Efficiency rate	22.00%
Maximum power(w)	150w
Power Tolerance	(+/-)3%
Voltage at max power(Vmp) (V)	18.43V
Current at max power(Imp) (A)	8.14A
Open circuit voltage(Voc) (V)	21.68V
Short circuit current(Isc) (A)	8.62A
Operating Temperature (°C)	(-)20 to 50°C
Maximum System Voltage (V)	1000V
Maximum Series Fuse Rating (A)	15A
Standard Test Condition	Irradiance 1000W/M ² Module temperature 25°C,AM=1.5
Warranty	Power is not less than 90% in 5 years
Application Class	Class A
Noct	46°C +/- 2°C
Current temperature coefficient	0.05%/°C
Voltage temperature coefficient	(-)0.35%/°C
Power temperature coefficient	(-)0.45%/°C

Picture



Fixed Solar panel 200w

Model No: **XRM-200W**

Product specification

Front Cover :	3.2mm,High Transmission, Low Iron, Tempered ARC Glass
Frame Material	Anodized Aluminium Alloy
Accessories:	IP65 Junction box and 90cm length 4.0mm ² cable
Color:	black
Dimensions (MM)	1480x670x35MM
Packing Size (CM)	150x69x5CM
Net weight (KG)	11KG
Gross weight (KG)	11.9KG

Key Features

- 3.2mm tempered low-iron glass: optically clear with high impact resistance
- High-efficiency A-grade monocrystalline solar cells: for better performance & longer lifespan
- Black frame, cells and substrate: looks great on any vehicle
- High-quality MC4 plugs w/0.9m cable: ensures a secure, waterproof connection

Solar panel

Solar Cell	Monocrystalline solar cell
Efficiency rate	22.00%
Maximum power(w)	200w
Power Tolerance	(+/-)3%
Voltage at max power(Vmp) (V)	18.3V
Current at max power(Imp) (A)	10.93A
Open circuit voltage(Voc) (V)	21.18V
Short circuit current(Isc) (A)	11.48A
Operating Temperature (°C)	(-)20 to 50°C
Maximum System Voltage (V)	1000V
Maximum Series Fuse Rating (A)	15A
Standard Test Condition	Irradiance 1000W/M ² Module temperature 25°C,AM=1.5
Warranty	Power is not less than 90% in 5 years
Application Class	Class A
Noct	46°C +/- 2°C
Current temperature coefficient	0.05%/°C
Voltage temperature coefficient	(-)0.35%/°C
Power temperature coefficient	(-)0.45%/°C

Picture

